

# MILLENNIUM ECO CALCULATOR

---

USER'S MANUAL

# MILLENNIUM ECO CALCULATOR

## – User Manual

[Back to Calculator](#)

### Index

1. CALCULATION .....	4
1.1. User login.....	4
1.2. New calculation or offer editing.....	5
1.3. Offer description and choice of location.....	5
1.4. Construction type or adding new item.....	8
1.5. Choice of window shape .....	8
1.6. Choice of glass type .....	9
1.7. Choice of glass types .....	10
1.8. Window dimension .....	11
1.9. Modification of dimension .....	11
1.10. Field functions .....	15
1.11. Creation of Dummy Bars or No Dummy Bars.....	15
1.12. Creation of Tilt opening.....	16
1.13. Creation of Turn or Tilt/Turn opening.....	17
1.14. Creation of Turn plus Tilt/Turn window with COUPLING MULLION .....	18
1.15. Extra accessories for vent (according to Millennium Catalogue).....	19
1.16. EXTRA ACCESSORIES for item (according to Millennium Catalogue).....	20
1.17. Choice of Surface Finish type .....	21
1.18. Choice: No Other Item Needed / Add Another Item.....	22
1.19. Choice: Packing / Transport or Packing Only.....	22
1.20. Destination choice.....	23
1.21. Description of screen 'Summary' for user.....	24
1.22. Client view .....	26
1.23. Client PDF view.....	27
1.24. Offer items – list .....	28
2. Additional functions.....	30
2.1. Changes: number of item, type of subsystem, type of glass and type of finishing on screen 'Summary'. .....	30
2.2. Static checking of item during the state of item creation.....	31
2.3. Copying the item from existing offer .....	32
3. Untypical cases.....	33
3.1. Too small glass – case 1.....	33
3.2. Too small glass – case 2.....	34
4. List of hints and instructions .....	36

### Intro

Millennium eco Calculator has been created in order to make calculation of offers that include constructions developed in Millennium system easier and faster. It enables to quickly calculate an offer during the meeting with a customer at the building site or at the meeting. It is also possible to use this tool in the office. It is very helpful as it can be used both via mobile devices connected to the Internet and PCs. Millennium eco Calculator is a user-friendly software, which is easy to use also for persons who are not familiar with Millennium eco system. It's an intuitive tool based on simplifications and assumptions presented hereunder. Millennium eco Calculator efficiently calculates basic items, however, in case of more complex constructions, please contact Millennium eco Calculator for help.

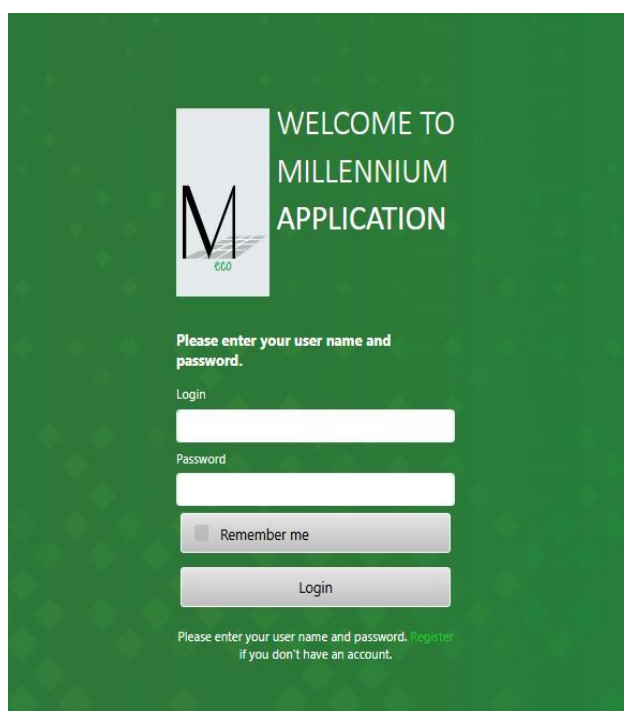


## 1. CALCULATION

### 1.1. User login

PLEASE FOLLOW: <http://www.millennium.eco>

Please use your individual login and password from Millennium eco.  
Should you not have one please contact Millennium eco



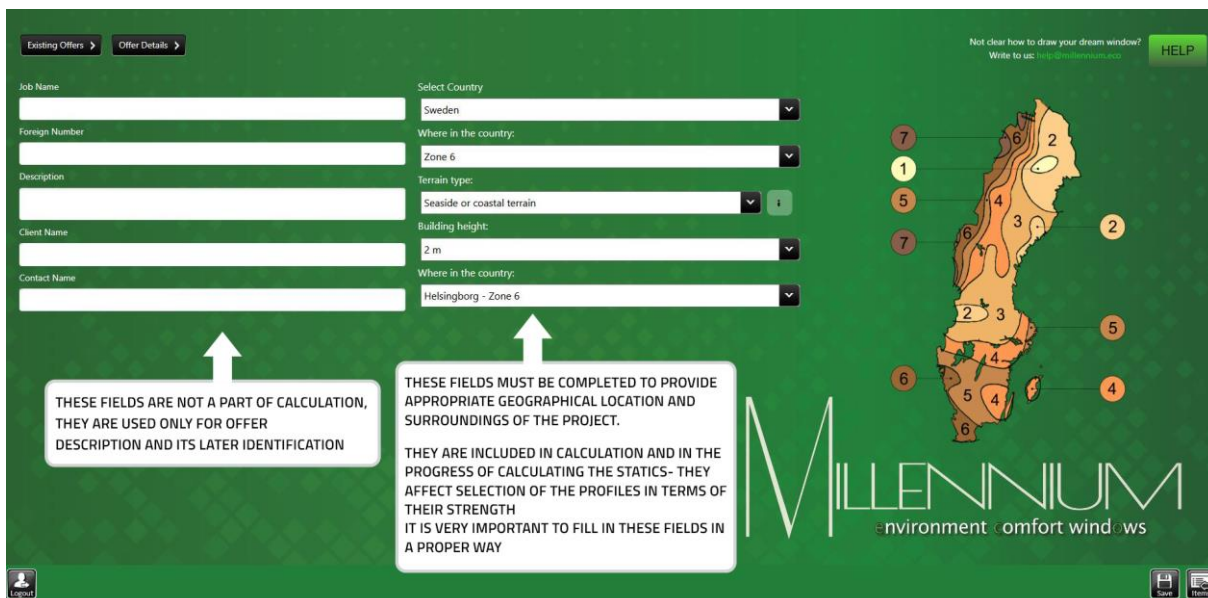
The screenshot shows a login page with a green background. At the top left is the Millennium eco logo. To its right, the text reads "WELCOME TO MILLENNIUM APPLICATION". Below this, a prompt says "Please enter your user name and password." There are two input fields: "Login" and "Password". Below the "Password" field is a "Remember me" checkbox and a "Login" button. At the bottom, a small note says "Please enter your user name and password. [register](#) if you don't have an account."

Now, you can change your login and password (known only for you) and select '**Millennium eco Calculator**' icon, please.

1.2. New calculation or offer editing



1.3. Offer description and choice of location



- Choice of location:

- For Calculator purposes the descriptions are simplified as per table below:

Country	Terrain type (simplified name)	Description by EN
Poland	Coastal terrain	At the coast
	Country terrain	In open country
	Mountain terrain	Exposed on top of hill or mountain
	Forest terrain	Country covered with vegetation or other obstacles
	Town terrain	In the city, where you are surrounded by buildings of same height
United Kingdom	Coastal terrain	Sea terrain
	Country terrain	Country terrain
	Town terrain	Town terrain
Denmark	Seaside terrain	Open, flat landscape
	Forest terrain	Fields with windbreaks, spread out buildings or trees
	Industrial Terrain	Suburban or industrial areas
	Town terrain	Town area with dense buildings
Norway	Seaside terrain	Open rough sea
	Coastal terrain	Coastal area, lakes. Open spaces and beach areas without trees or bushes.
	Coastal terrain	Farming area with spread out buildings and trees.
	Industrial Terrain	Coherent houses, industrial areas or forest areas.
	Town terrain	Town area with minimum 15% of the area are covered with buildings and their average height exceeds 15 m.
Sweden	Seaside or coastal terrain	Sea or coastal area exposed to the open sea
	Coastal or trees terrain	Lakes or glad and horizontal area with negligible vegetation and without obstacles
	Forest or country terrain	Area with low vegetation such as grass and isolated obstacles (trees, buildings) with separations of at least 20 obstacles height



	Country terrain	Area with regular cover of vegetation or buildings or with isolated obstacles with separation of maximum 20 obstacles heights (such as villages, suburban terrain, permanent forest)
	Town terrain	Area in which at least 15 % of the surface is covered with buildings and their average height exceeds 15 m
Germany	Coastal terrain	Open sea, lakes with a free surface of at least 4 km in wind direction; level, flat country without obstacles.
	Country terrain	Terrain with hedges, isolated farmsteads, houses or trees, e.g. agricultural areas
	Industrial Terrain	Suburbs, industrial or commercial areas; forests/woods
	Town terrain	Urban areas in which at least 15 % of the surface is covered with buildings of a mean height of more than 15 m

- In case Wind Zone is unknown, the User can select 'WHERE IN THE COUNTRY' and go for a CITY NAME. Once this is done, the Calculator will automatically set up static parameters. Please see table below :

Existing Offers >
Offer Details >

Job Name

Foreign Number

Description

Client Name

Contact Name

Select Country  
Sweden

Where in the country:  
Zone 3

Terrain type:  
Seaside or coastal terrain

Building height:  
2 m

Where in the country:  
-

Ale - Zone 5

Alingsas - Zone 5

Älmhult - Zone 5

Älvdalen - Zone 6

Alvesta - Zone 4

Älvkarleby - Zone 3

Älvsbyn - Zone 1

Amal - Zone 4

Aneby - Zone 4

Ange - Zone 3

Ängelholm - Zone 5

Arboga - Zone 3

Are - Zone 6

Arjärg - Zone 3

Arjeplog - Zone 6

Arvidsjaur - Zone 2

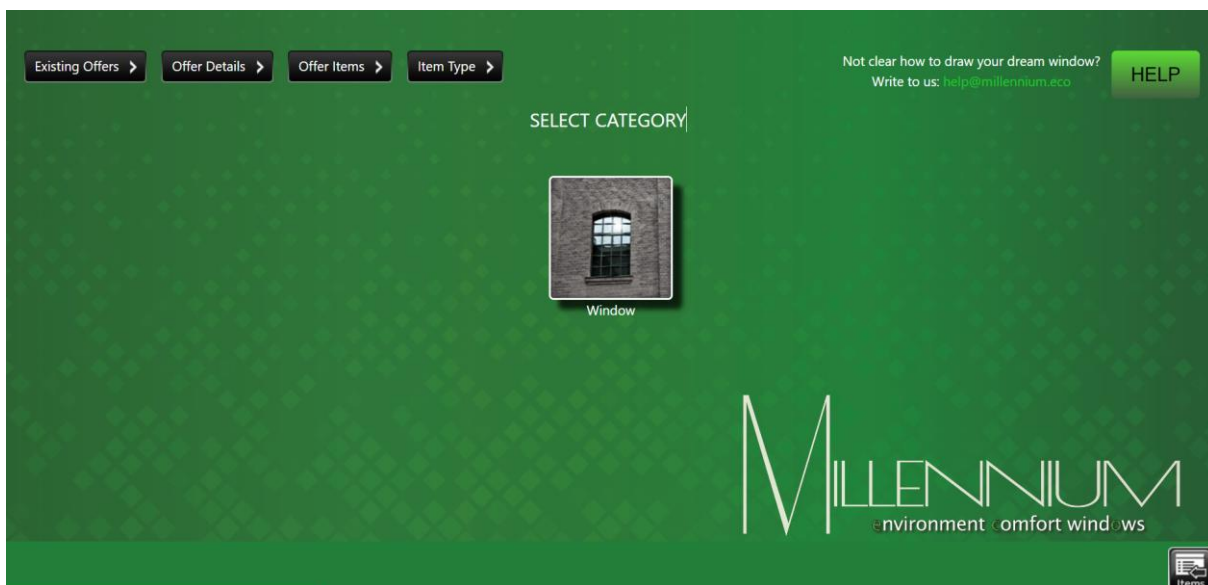
Arvika - Zone 3

Asele - Zone 3

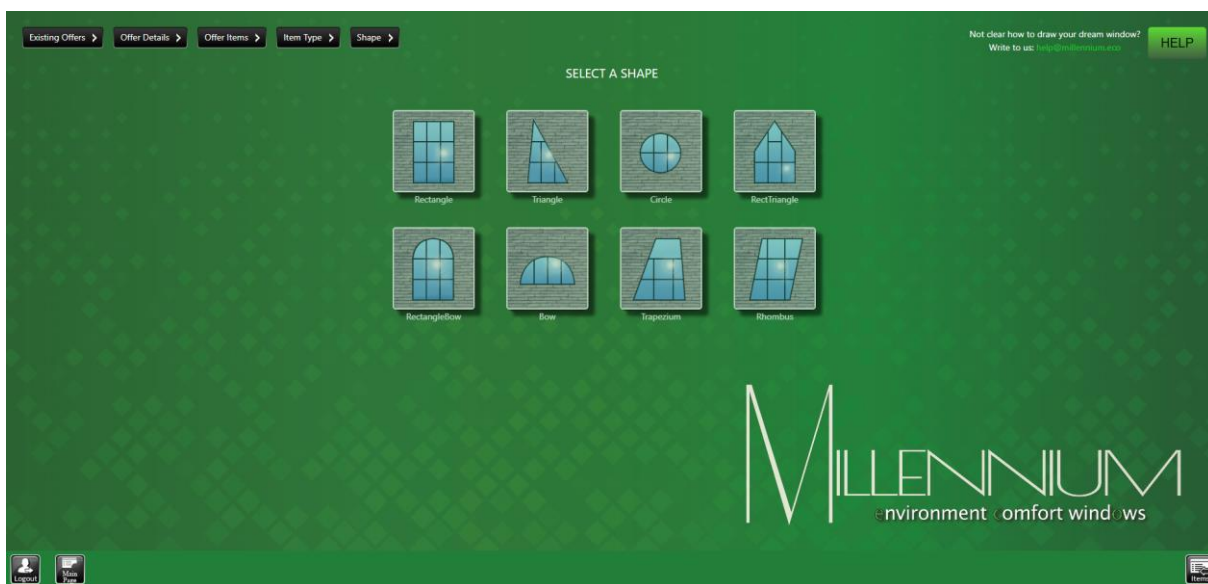
Astorp - Zone 5

## WINDOWS

### 1.4. Construction type or adding new item

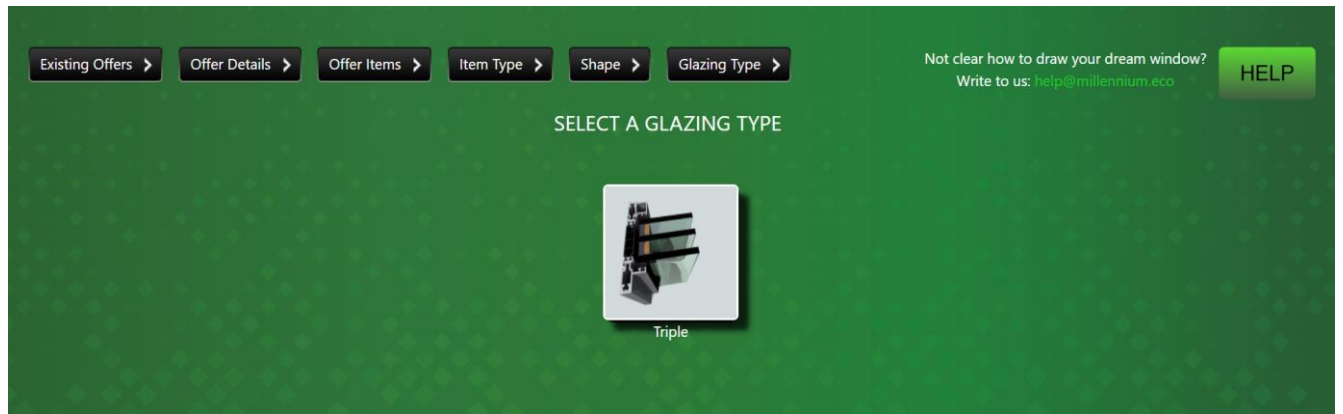


### 1.5. Choice of window shape





### 1.6. Choice of glass type



The User is not obliged to understand all Millennium subsystems and differences between them. The Calculator automatically picks appropriate subsystem which is determined by glass chosen.

### 1.7. Choice of glass types

SEARCHING AREA - TYPE WORD OR PHRASE (FROM COLUMN KIND, DESCRIPTION, TH, RC...ETC); EACH WORD/PHRASE SEPARATE BY SPACE

The screenshot shows the Millennium Eco Calculator interface. At the top, there are navigation tabs: Existing Offers, Offer Details, Offer Items, Item Type, Shape, Glazing Type, Spacer Type, and Glass Selection. A search bar is located below these tabs, with 'Filters' and 'Clear Filters' buttons. A table of glass options is displayed below the search bar. The table has columns for Kind of glass, Description of glass, Ug [W/(m²K)], Price [PLN/m²], Min pane size [mm], and Max pane size [mm].

Kind of glass	Description of glass	Ug [W/(m²K)]	Price [PLN/m²]	Min pane size [mm]	Max pane size [mm]
Standard 3x4mm	Standard Low E glass, Black Warm spacer	0.6	256	180x300	1300x2440
Standard 3x6mm	Standard Low E glass, Black Warm spacer	0.6	332	180x300	1300x2440
Standard 3x4mm TSG	Standard Low E glass, In&Out Tempered Black Warm spacer	0.6	338	180x300	1300x2440
Standard 3x6mm TSG	Standard Low E glass, In&Out Tempered Black Warm spacer	0.6	458	180x300	1300x2440
Solar-control 3x4mm	Sun protection glass (suncool 70/35) Black Warm spacer	0.6	357	180x300	1300x2440
Solar-control 3x6mm Green	Sun protection Green glass (suncool 70/35) Black Warm spacer	0.6	429	180x300	1300x2440
Solar-control 3x6mm Blue	Sun protection Blue glass (suncool 50/25) Black Warm spacer	0.6	429	180x300	1300x2440
Solar-control 3x6mm Green TSG	Sun protection Green glass (suncool 70/35), In&Out Tempered Black Warm spacer	0.6	506	180x300	1300x2440
Solar-control 3x6mm Blue TSG	Sun protection Blue glass (suncool 50/25), In&Out Tempered Black Warm spacer	0.6	506	180x300	1300x2440

#### EXPLANATIONS :

**Kind** – kind of glass

**Description** – glass specification

**Ug** - heat transfer coefficient of a given glazing [W/(m²K)]

#### Calculation of glass thickness:

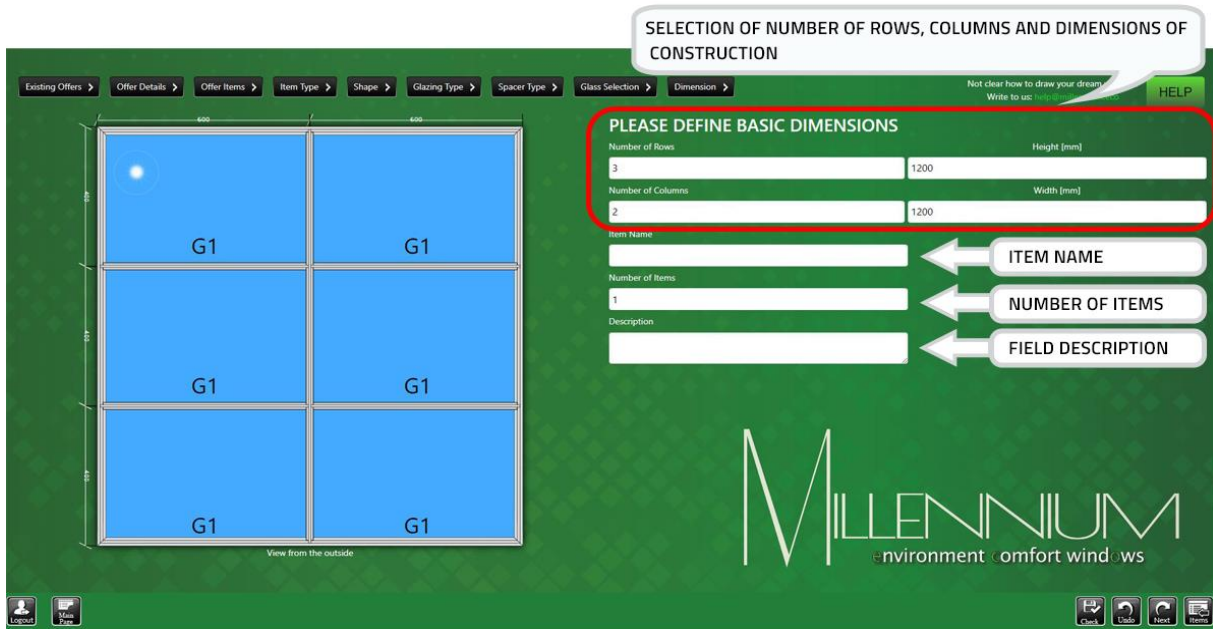
44.2 VSG = 4 mm pane of glass + 4 mm pane of glass + 2 x foil of 0,38 mm thickness = 8,76 ≈ 9 mm

6/16/6 = 6 mm pane of glass + 16 mm spacer + 6 mm pane of glass = 28 mm

**Price** – price of glass from Polish suppliers in PLN/m²

Once User chooses glass, please click **'NEXT'**

### 1.8. Window dimension



After defining a number of rows, columns and dimensions of construction you should select 'Check'. This function checks whether the construction is possible to be done. If not, Millennium eco Calculator displays a message in red colour including the reasons and returns to previous settings.

### 1.9. Modification of dimension



- When changing width or height of construction fields please select the field required. Change of width of the selected field results in change of width of the entire column. Change of height of the selected field results in change of height of the entire row (see [example no.1](#)).

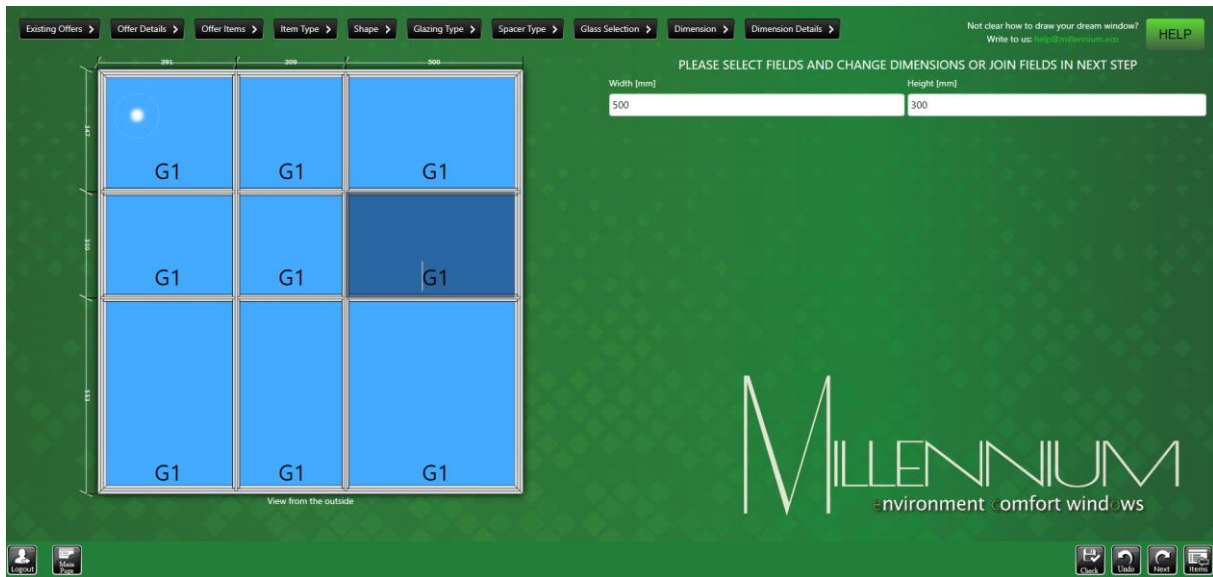
**EXAMPLE NO.1:**



- If you change just one or some fields dimensions other fields are automatically divided into equal sizes (see [example no.1](#)).
- After entering appropriate values, please click the button **‘Check’**. In case dimensions of fields are not possible, Millennium eco Calculator will display the reasons why that dimension is impossible in red colour

- Change of size (width or height) of next field does not change dimensions of the field previously changed (see [example no.2](#)) . Please note that the width of field previously changed has not changed.

**EXAMPLE NO.2:**



- If you want to change the size (width or height) of the middle field, you have two options :  
 OPTION 1 – dimensional changing of column and/or row (see [example no.3](#) and [no.4](#))

**EXAMPLE NO.3**



EXAMPLE NO.4:



OPTION 2 – dimensions re-edition of middle field (see [example no.5 below](#))

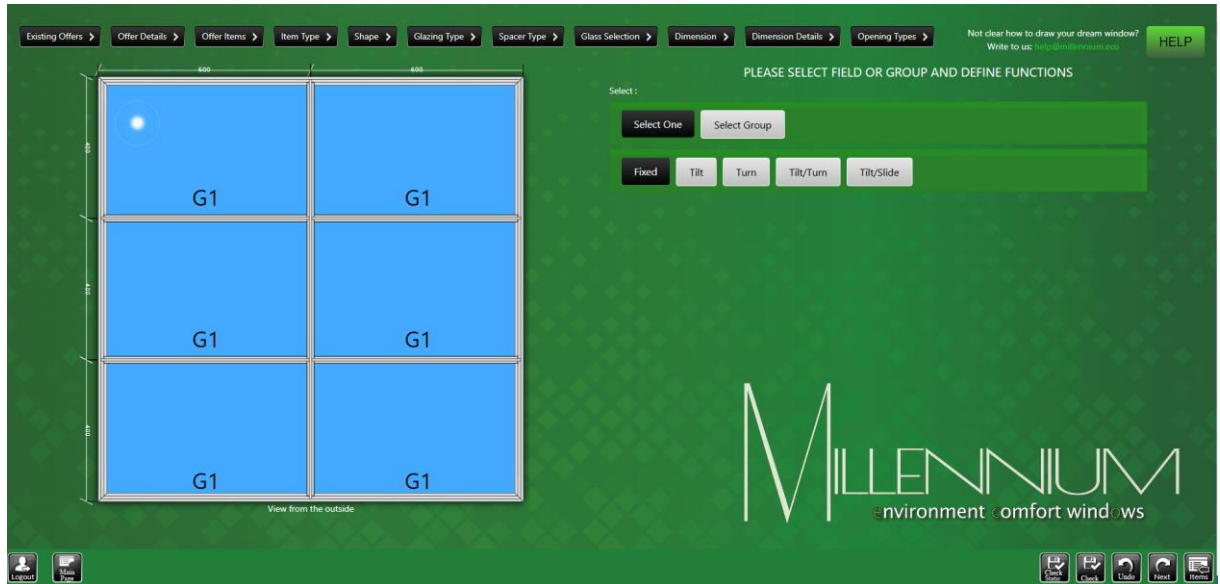


EXAMPLE NO.5:

- If you want to join fields into bigger field, please see point [2.13. \(Creation of Dummy Bars or No Dummy Bars\)](#)

**NOTE!** *if the dimensions of fields are correct that on screen is not any error assages*

1.10. Field functions

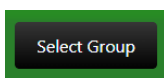


This screen enables to create the following types of windows: fixed, tilt, turn and tilt/turn.

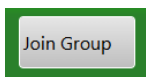
1.11. Creation of Dummy Bars or No Dummy Bars



- Select function:

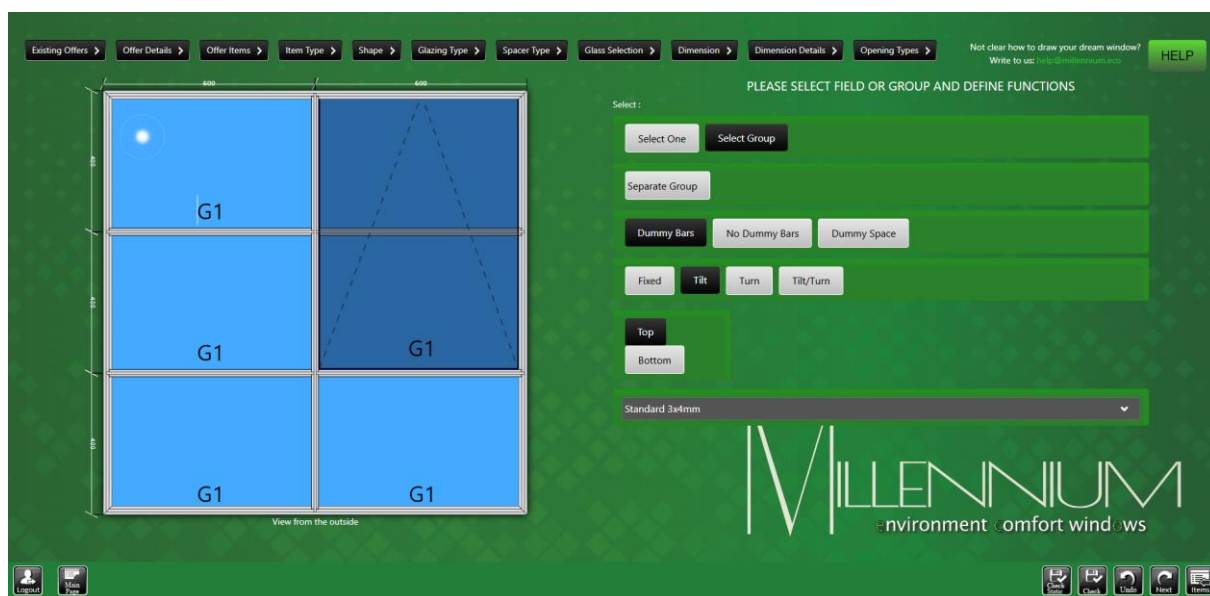


- Select fields in which dummy bars are to be used



- Select function:
- Select function:  
As a result a Constructional Spross is replaced with a Dummy Bar.

### 1.12. Creation of Tilt opening



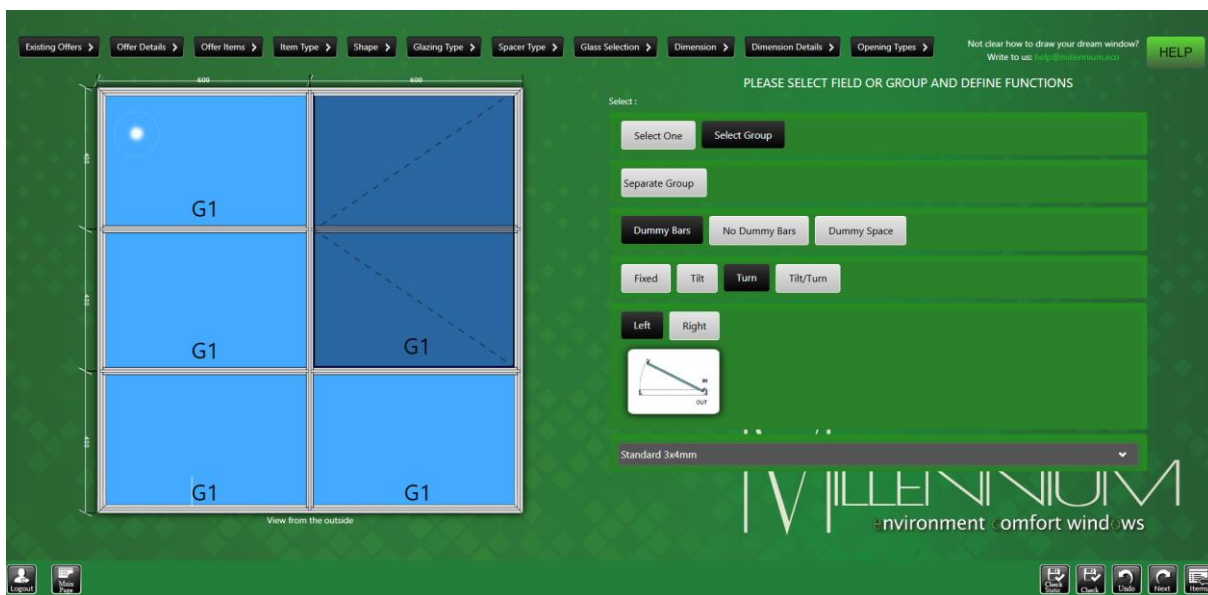
Select function : 

- Select fields to be joined



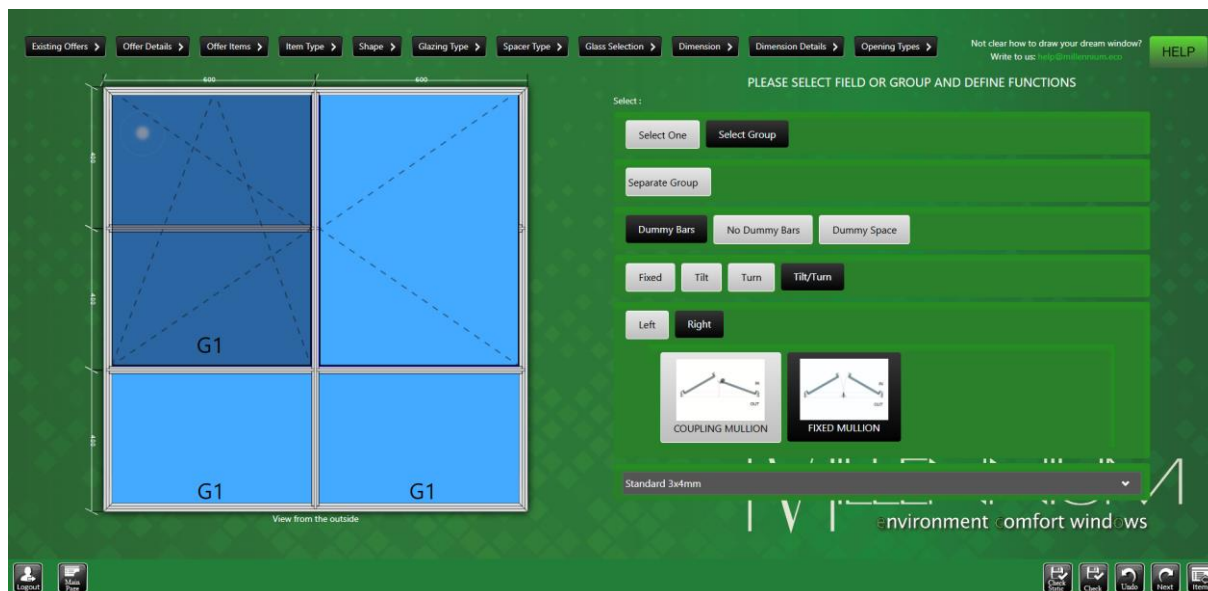
- Select function :
- Select function :
- Select location of hinges :  or

**1.13. Creation of Turn or Tilt/Turn opening**

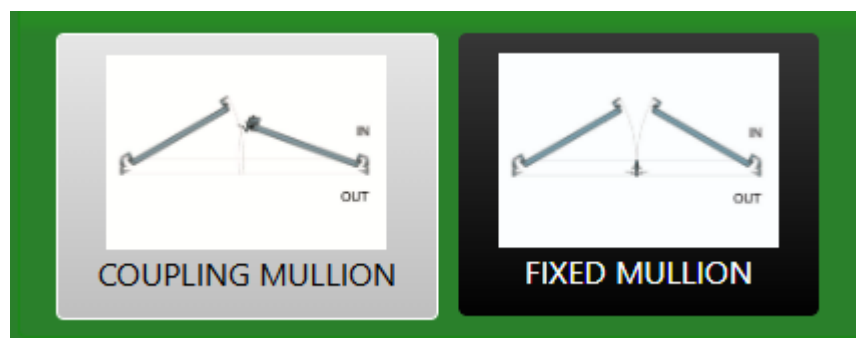


- Select function :
- Select fields to be joined
- Select function :
- Select function :  or
- Select opening side:  or

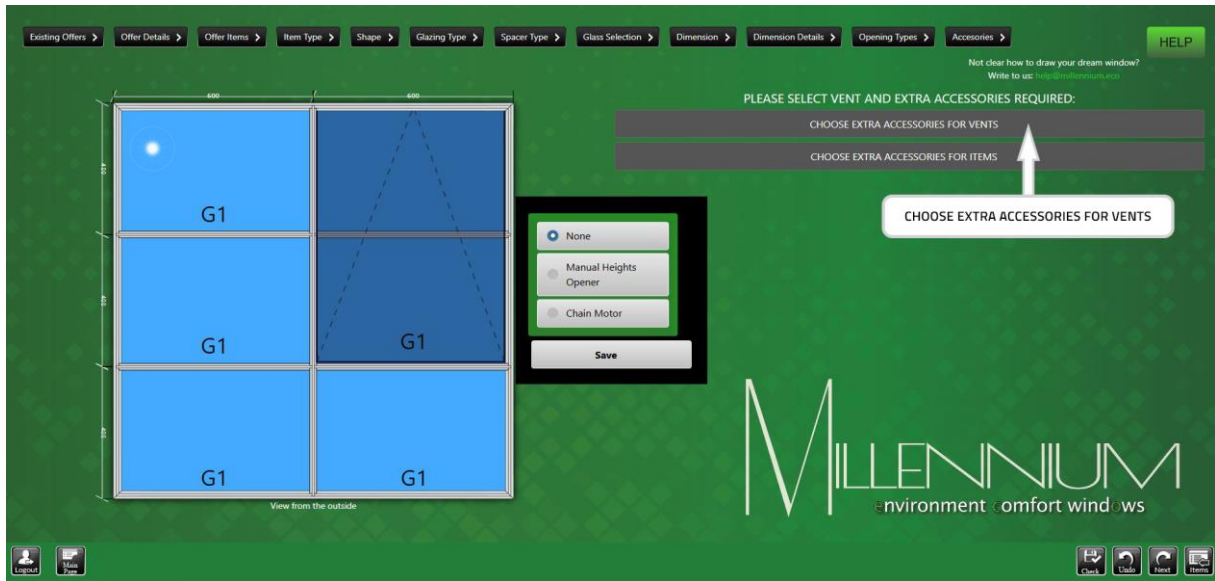
### 1.14. Creation of Turn plus Tilt/Turn window with COUPLING MULLION



- Please press Select Groups and Join Fields as above.
- Left hand sash is Tilt/Turn created as above.
- Right hand sash must be TURN ONLY and must open in the opposite side to the Tilt/Turn sash.
- Once this done, a new selection options are automatically displayed: you need to choose a window sash with COUPLING MULLION or FIXED MULLION.

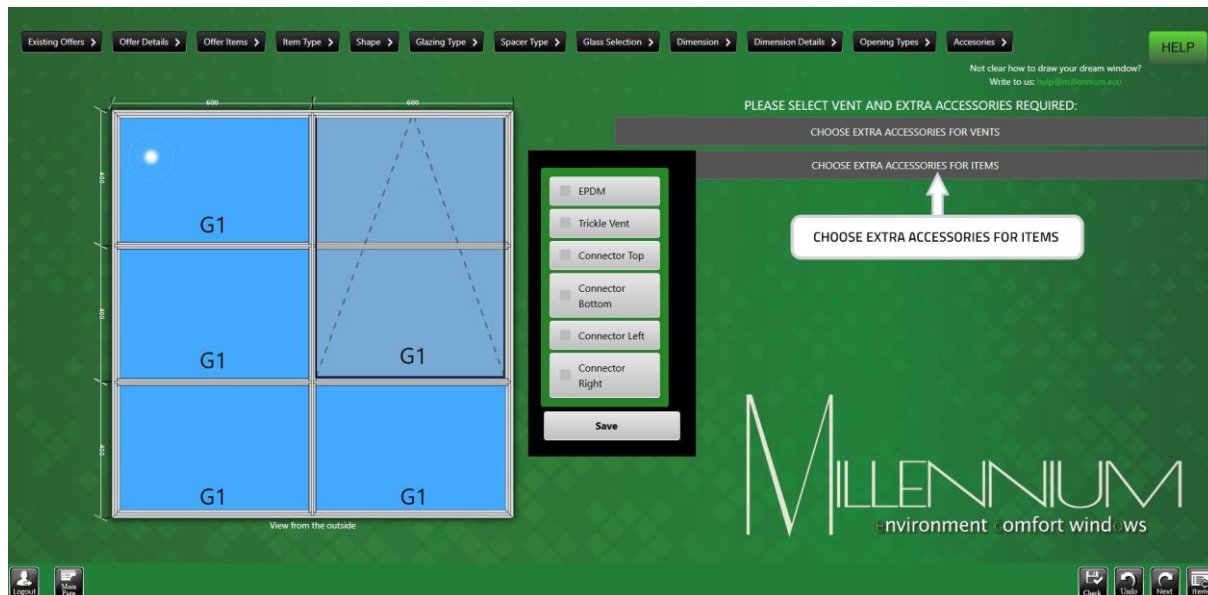


1.15.Extra accessories for vent (according to Millennium Catalogue)



- Select VENT required
- Select :
  - (option is available only for TILT or TURN vents) and make a choice :
  - Manual Heights Opener
  - Chain Motor
- Confirm by button 'Save'

1.16.EXTRA ACCESSORIES for item (according to Millennium Catalogue)



- Select :
  - And make a choice :
  - EPDM
  - Trickle Vent
  - Connector “swords” (Top, Bottom, Left, Right)
- Confirm by button ‘Save’

### 1.17.Choice of Surface Finish type



Standard RAL:

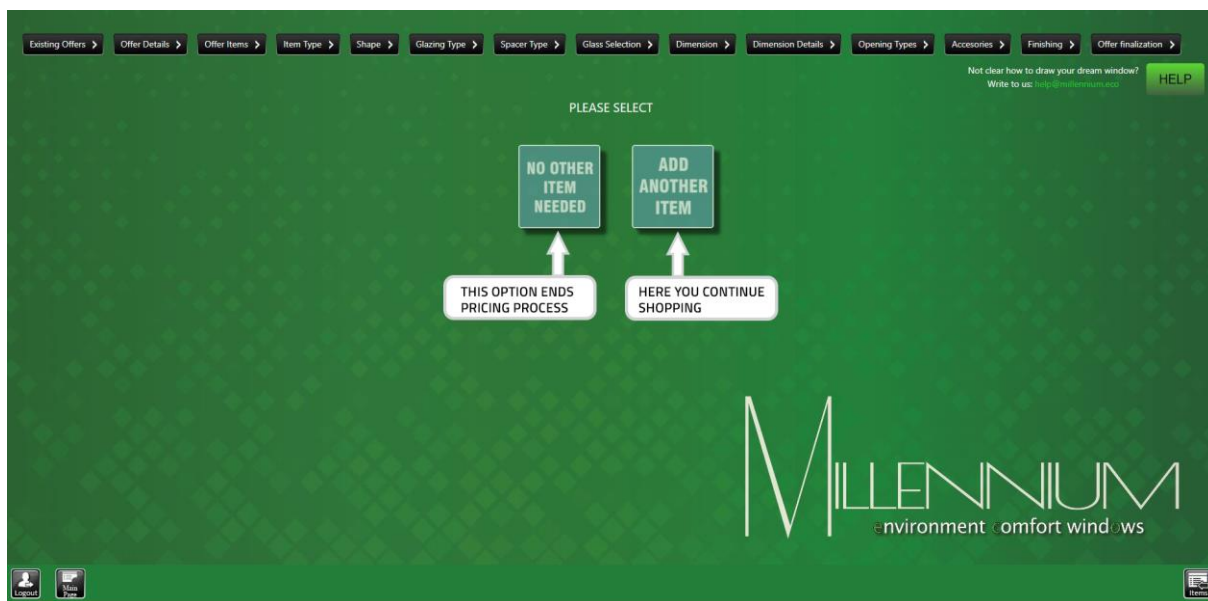
RAL 1000	RAL 1001	RAL 1002	RAL 1003	RAL 1004	RAL 1005	RAL 1006	RAL 1007
RAL 1011	RAL 1012	RAL 1013	RAL 1014	RAL 1015	RAL 1016	RAL 1017	RAL 1018
RAL 1019	RAL 1020	RAL 1021	RAL 1022	RAL 1023	RAL 1027	RAL 1028	RAL 1030
RAL 1033	RAL 1034	RAL 2000	RAL 2001	RAL 2002	RAL 2003	RAL 2009	RAL 2009
RAL 2009	RAL 2010	RAL 2011	RAL 2012	RAL 3000	RAL 3001	RAL 3002	RAL 3003
RAL 3004	RAL 3005	RAL 3007	RAL 3009	RAL 3011	RAL 3012	RAL 3013	RAL 3014
RAL 3015	RAL 3016	RAL 3017	RAL 3018	RAL 3020	RAL 3022	RAL 3027	RAL 3031
RAL 4001	RAL 4002	RAL 4003	RAL 4004	RAL 4005	RAL 4006	RAL 4007	RAL 4008
RAL 4009	RAL 5000	RAL 5001	RAL 5002	RAL 5003	RAL 5004	RAL 5005	RAL 5007
RAL 5008	RAL 5009	RAL 5010	RAL 5011	RAL 5012	RAL 5013	RAL 5014	RAL 5015
RAL 5017	RAL 5018	RAL 5019	RAL 5020	RAL 5021	RAL 5022	RAL 5023	RAL 5024
RAL 6000	RAL 6001	RAL 6002	RAL 6003	RAL 6004	RAL 6005	RAL 6006	RAL 6007
RAL 6008	RAL 6009	RAL 6010	RAL 6011	RAL 6012	RAL 6013	RAL 6014	RAL 6015
RAL 6016	RAL 6017	RAL 6018	RAL 6019	RAL 6020	RAL 6021	RAL 6022	RAL 6024
RAL 6025	RAL 6026	RAL 6027	RAL 6028	RAL 6029	RAL 6030	RAL 6033	RAL 6034
RAL 7000	RAL 7001	RAL 7001	RAL 7002	RAL 7003	RAL 7004	RAL 7006	RAL 7006
RAL 7008	RAL 7009	RAL 7010	RAL 7011	RAL 7012	RAL 7013	RAL 7015	RAL 7016
RAL 7021	RAL 7022	RAL 7023	RAL 7024	RAL 7026	RAL 7030	RAL 7031	RAL 7032
RAL 7033	RAL 7034	RAL 7035	RAL 7036	RAL 7037	RAL 7038	RAL 7039	RAL 7040
RAL 7042	RAL 7043	RAL 7044	RAL 8000	RAL 8001	RAL 8002	RAL 8003	RAL 8004
RAL 8007	RAL 8008	RAL 8011	RAL 8012	RAL 8014	RAL 8015	RAL 8016	RAL 8017
RAL 8019	RAL 8022	RAL 8023	RAL 8024	RAL 8025	RAL 8028	RAL 9001	RAL 9002
RAL 9003	RAL 9004	RAL 9005	RAL 9010	RAL 9011	RAL 9016	RAL 9017	RAL 9018

or

Special RAL

After selection of required finishing, you go to the next screen automatically

1.18.Choice: No Other Item Needed / Add Another Item



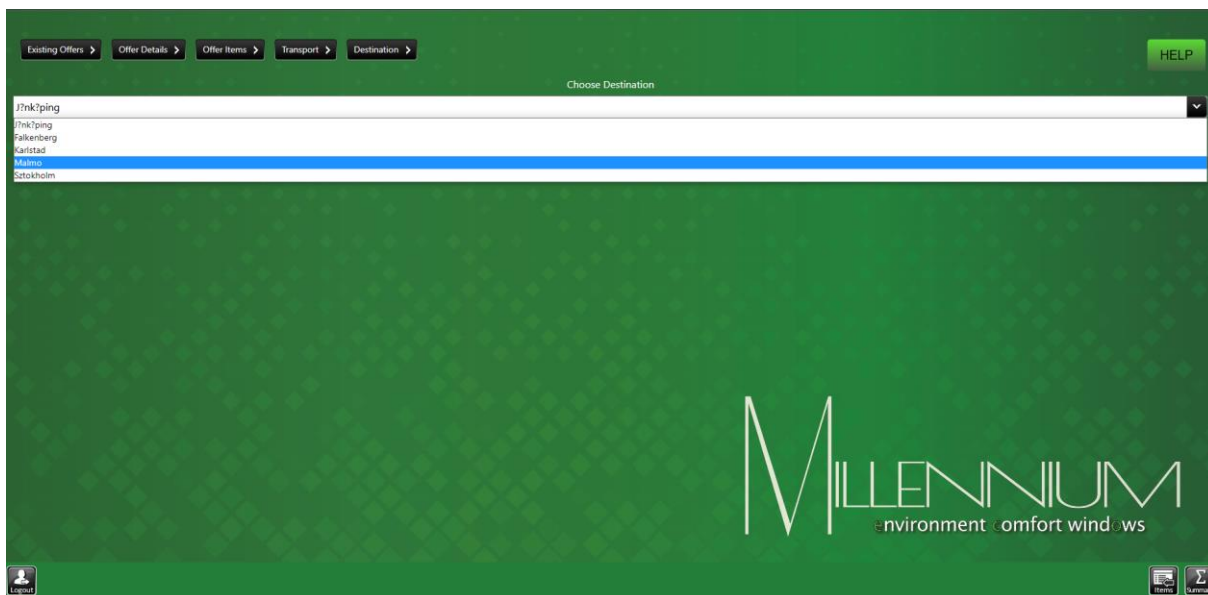
You go to next screen automatically

1.19.Choice: Packing / Transport or Packing Only



You go to next screen automatically

### 1.20. Destination choice



After selecting a destination, please press **'Summary'** button.

**NOTE!**

*if the list of cities does not include the destination, please select a city that is closest to the point of delivery. In this case, please remember that any differences in cost of delivery will be agreed between your company and Hansen Polska.*

1.21. Description of screen 'Summary' for user

OFFER DESCRIPTION

ACTIVE WINDOW TO ENTER EXPECTED TIME OF INSTALLATION

TOTAL PRICE

OFFER DESCRIPTION

AREA AND CIRCUMFERENCE OF CONSTRUCTION

COMMENTS RELATED TO OFFER. NOTE: TRANSPORT IS INCLUDED IN THE OFFER IF CONSTRUCTIONS TAKE UP AREA OF... (SEE SIMPLIFICATIONS AND ASSUMPTIONS OF USER MANUAL)

FIELD FOR ENTERING INDIVIDUAL COMMENTS

Description details of item:

Item Name: A

Dimensions(mm): 1200 x 1200

Price: 8957,39 PLN

Number of Items: 1

Description:

Subsystem: G40

Glass: [PLN/m<sup>2</sup>] G1 Standard 3x4mm Standard Low E glass, Black Warm spacer Warm Spacer

Finishing: Standard RAL

Extra Accessories:

ITEM NAME (EDIT OPTION)

DIMENSIONS OF ITEM

PRICE OF ITEM

NUMBER OF ITEMS (EDIT OPTION - SEE P.3.1)

DESCRIPTION OF ITEM (EDIT OPTION)

SELECTED SUBSYSTEM (EDIT OPTION- SEE P.3.1)

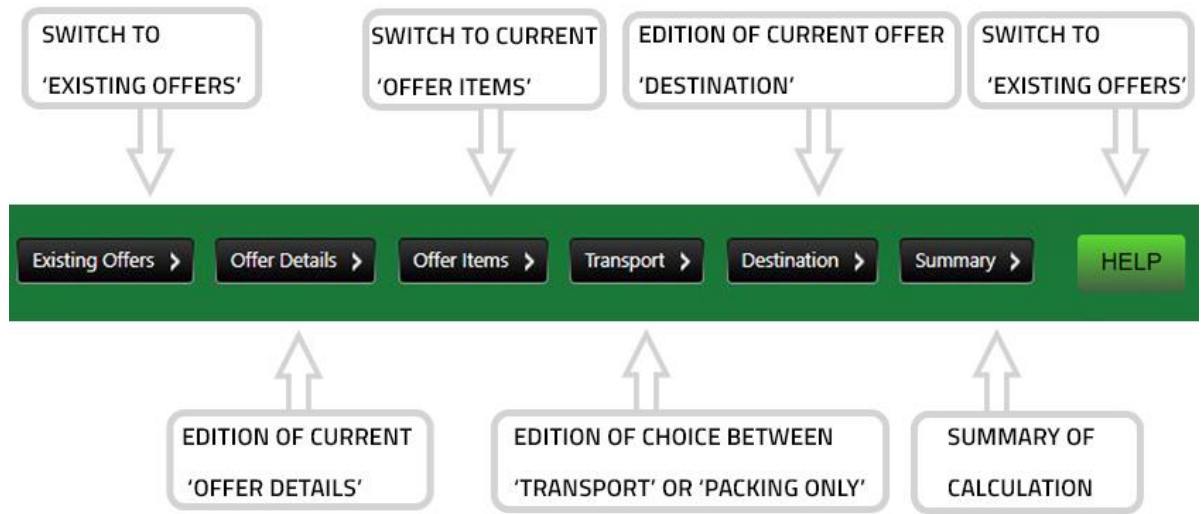
SELECTED SUBSYSTEM (EDIT OPTION- SEE P.3.1)

FINISHING (EDIT OPTION - SEE P.3.1)

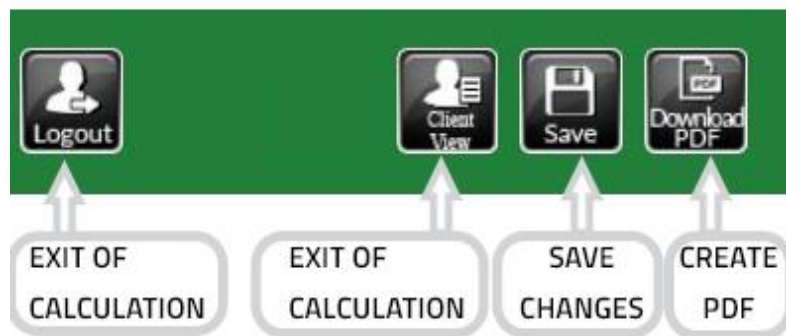
ADDITIONAL ACCESSORIES OF ITEM

Explanation of tabs:





- Explanation of buttons:





### 1.22.Client view

**MILLENNIUM eco**  
Prenatal Falkenberg  
Box 373  
SE 311 22 FALKENBERG  
0346 034 90  
0346 036 80  
falkenberg@prenatal.se

Order No.: 25  
Design No.: 1  
Order Date: 07.07.2022  
Order Name: 1  
Job Name: 1  
Description: 1  
Contract Name: 1  
Delivery Method: Project  
Estimate: 202207  
Estimated Installation Date From: 07.07.2022  
Estimated Installation Date To: 07.07.2022

**SUMMARY [TOTAL]** **20997 SEK**  
Including total installation price: 640 SEK

**Comments**  
PRICE OF TRANSPORT BASED ON MAXIMUM OF LOBBY CARGO SPACE.  
PLEASE NOTE THAT ESTIMATED CREDIT PENDING DATE DEPENDS ON POSSIBLE PRODUCTION TIME AND HAS TO BE CONFIRMED BY HANSEN P&S A/S.

**Other Comments**

**Item Name:** \_\_\_\_\_  
**Dimensions:** 1200 x 1200  
**Price:** 20997,50 SEK  
**Number of Items:** \_\_\_\_\_  
**Description:** \_\_\_\_\_  
**Substom:** G1  
**Class:** Standard Juleten Standard Line 1 glass, Back Warm-spacer Warm Spacer  
**Finishing:** \_\_\_\_\_  
**Extra Accessories:** Standard G1



1.23.Client PDF view

Precedal Pallenberg  
 Box 173  
 SE-311 20 Helsingborg

040-034 22  
 040-100 10  
 pallenberg@precedal.se

Offer No.: **35**  
 Foreign No.: **1**  
 Date: **07.07.2022**  
 Client Name: **1**  
 Job Name: **1**  
 Description: **1**  
 Contact Name: **1**  
 Delivery Place: **Malmö**  
 Estimator:

Summary

20097 SEK

Total installation price

0,00 SEK

Item Name:	
Dimensions:	1200 x 1200
Price:	20097,36 SEK
Number of Items:	1
Description:	
Estimate:	030
Class:	Standard Surface Standard Low E glass, Black Warm spacer Wave Spacer
Finishing:	EM
Units:	
Accessories:	

COMMENTS

Price of transport based on maximum of lorry cargo space

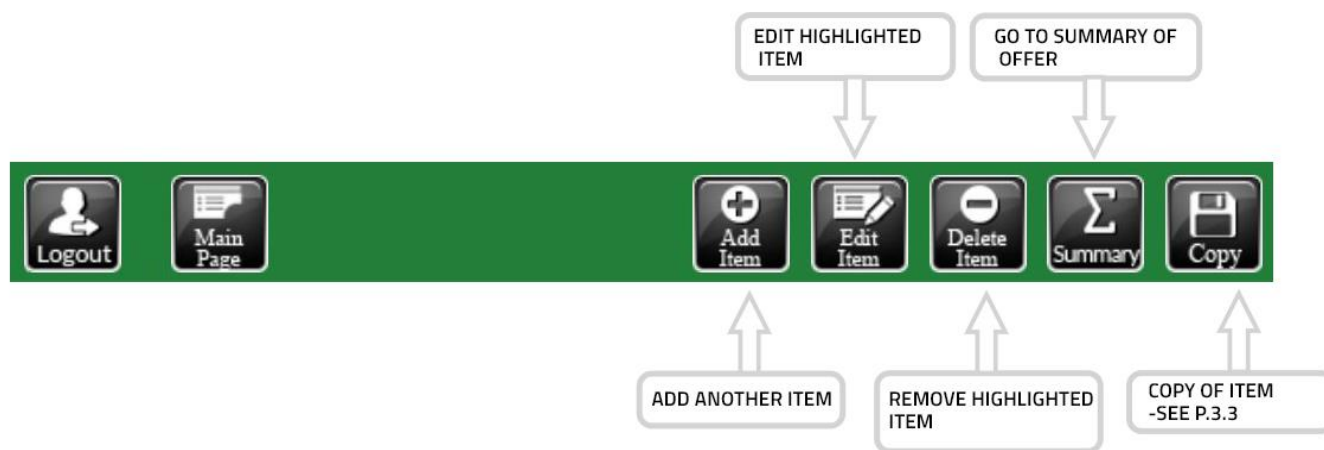
Estimation installation date has to be confirmed with Hansen Polska Capacity Planning.

OTHER COMMENTS

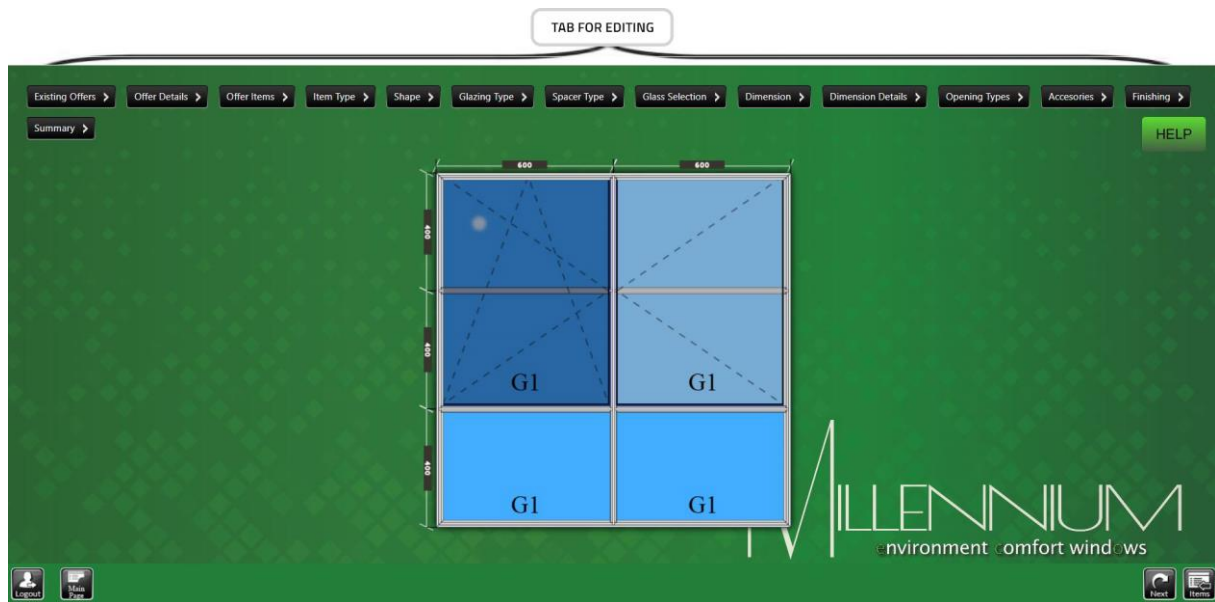
1.24.Offer items – list



- Item shown in red means that the calculation of this item is not completed.
- Explanation of buttons:



Items editing



- At the top of screen various tabs for editing of item are located.
- Get back to any screen, edit what you want to change and simply press “Next” button till you reach “Summary”.

## 2. Additional functions

### 2.1. Changes: number of item, type of subsystem, type of glass and type of finishing on screen 'Summary'.



- Number of item.

If number of item to be different than originally you can change number in active editing line (without having to edit item) .

- Type of subsystem.

The changing of subsystem may be needed if Calculator automatically selects different subsystems for few items and user decide that want to unify subsystems.

(The same subsystem in all items more preferably impact on profiles optimization and hence for value of offer.)

Change is possible only for subsystem which is statically allowed – Calculator will automatically display proper subsystems.

- Type of glass.

The changing type of glass from “Summary” screen facilitate:

- change of price offer due to new glass
- matching thicker of glass package to revised subsystem

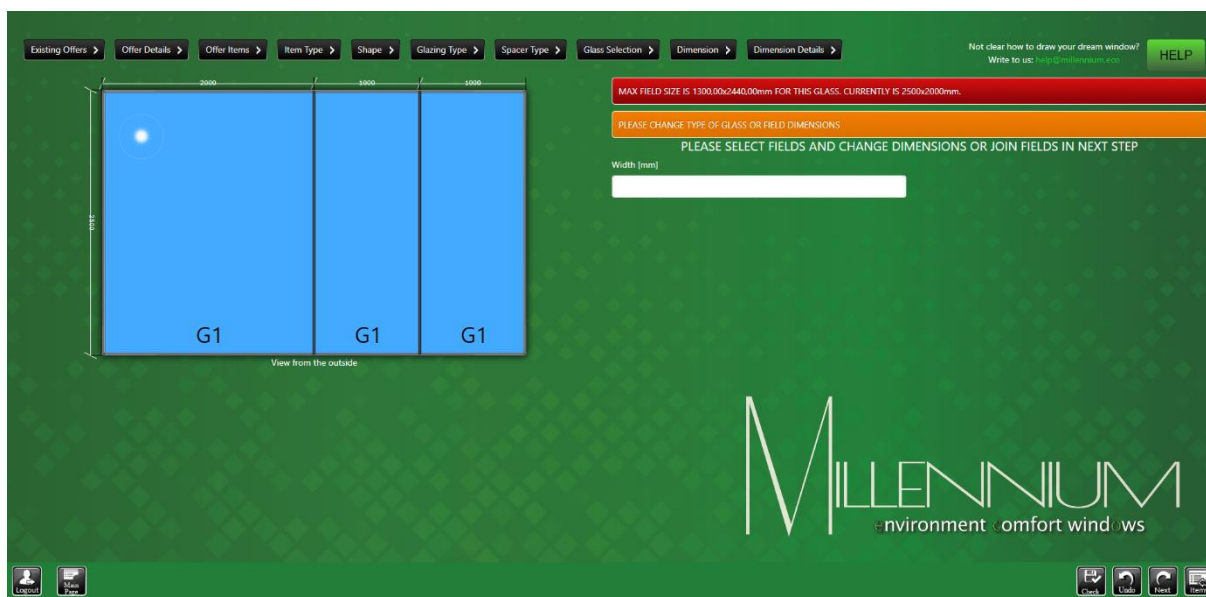
- Type of finishing.

You can change type of finishing from standard lacquer to standard anode or conversely.

**NOTE!**

After each change, press button ‘Save’ and in case of glass change Calculator automatically redirects to editing item.

## 2.2. Static checking of item during the state of item creation



You can test item according to static parameter pressing **‘Check Statics’** button.

If messages is **“STATIC ERROR”** it meaning, that item is out of static parameter.

Automatically hint:

*“ Please edit item and change the following:*

*1)Static parameters - change dimensions or division or split construction;*

*OR*

*2) Glass parameters – change thickness of glass (thicker than before) for use more strengthens subsystems according to ‘Database Profiles Systems’ matrix. „*

If message is **“STATIC OK”** it means, that item is strong enough in terms for static parameters.

### 2.3. Copying the item from existing offer

- In tab 'Offer Items' press button 'Copy', then you will be switched to tab 'Existing Offers'



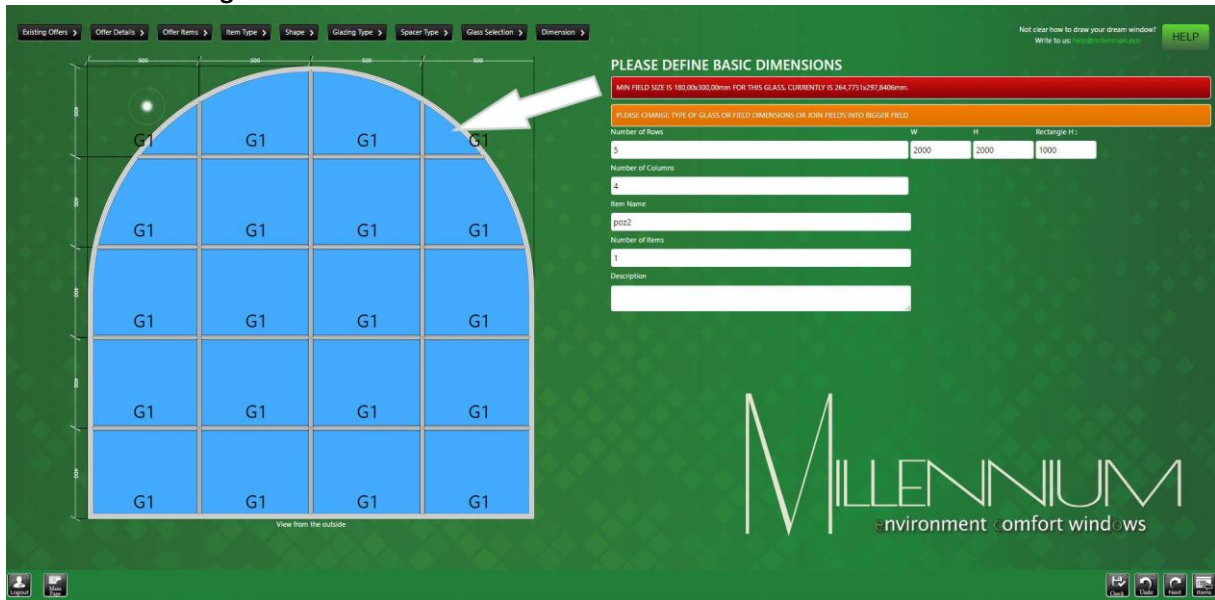
- In tab 'Existing Offers' please, highlight required item from list and press button 'Copy'





### 3. Untypical cases

#### 3.1. Too small glass – case 1

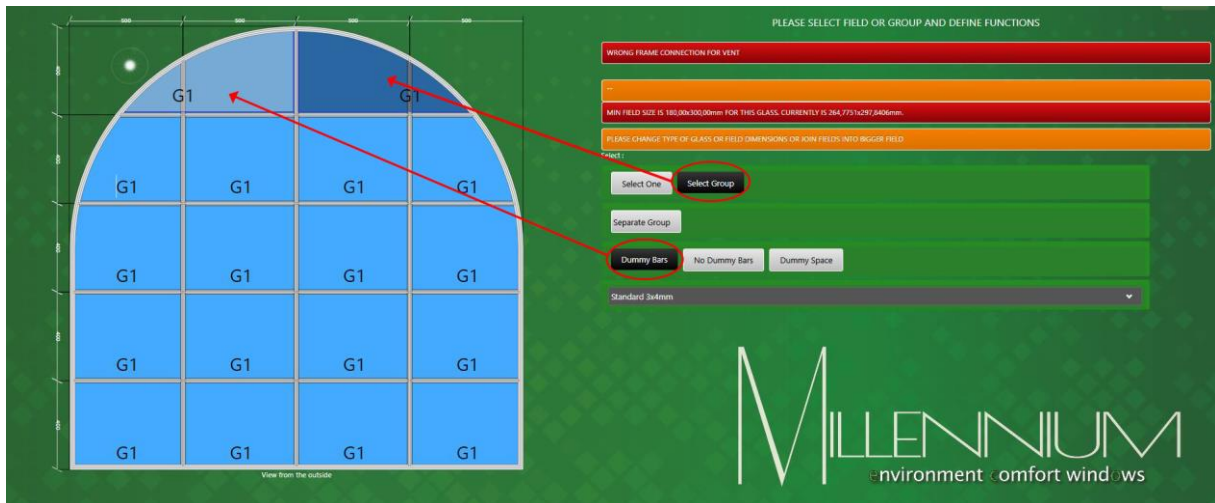


- Please change dimensions of selected field (e.g. from 500 mm to 600 mm or more)

OR

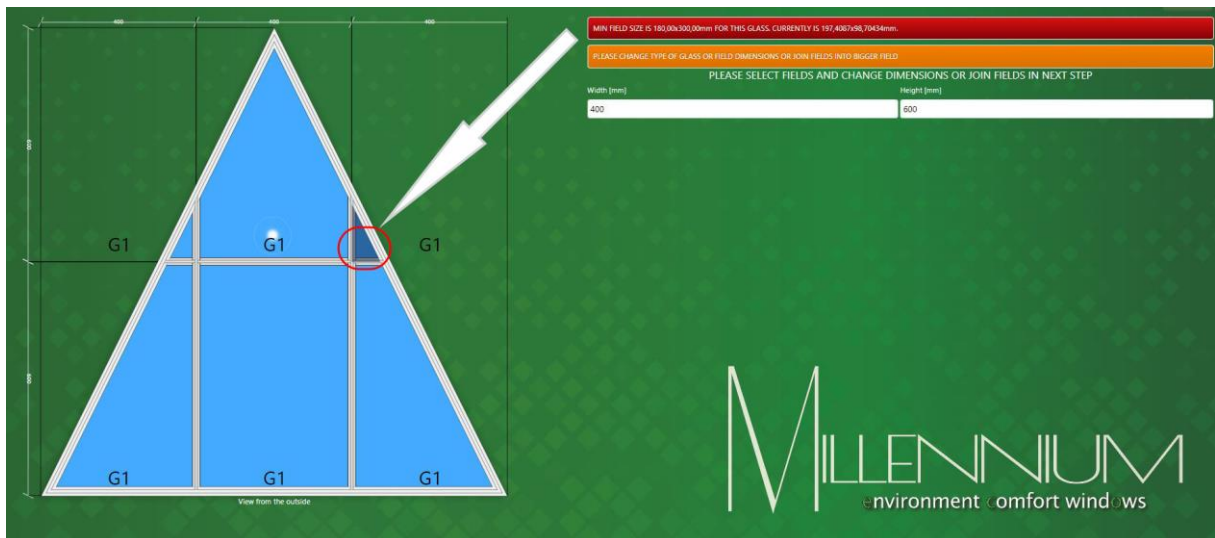


- Please **'Select Group'** and join field and define function **'Dummy Bars'** or **'No Dummy Bars'**.

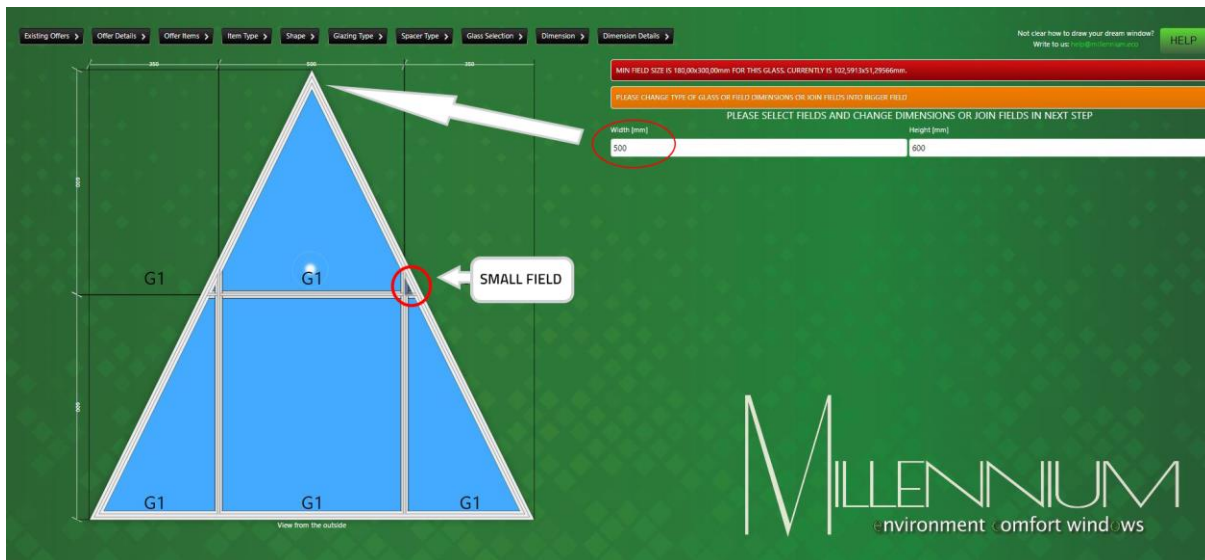


In this case glass will be joined into larger size (possible to produce).

### 3.2. Too small glass – case 2



- Please go to next screen and change dimension for selected field (e.g. from 400 mm to 500 mm)



In case when the field is too small (not active to edit / size of glass is less than 50mm x 50mm) fields will be automatically joined into bigger field with a dummy bar.

#### 4. List of hints and instructions

HINTS:	INSTRUCTIONS:
if it is nothing selected to edit: <b>SELECT FIELD</b>	
if it is attempt to join wrong fields: <b>JOINING FIELDS IS NOT AVAILABLE</b>	<b>PLEASE CHANGE ELEMENT OR SELECT "FIXED" FOR THIS FIELD</b>
if it is attempt to insert vent to wrong shape field: <b>VENT OPTION IS NOT AVAILABLE FOR THIS SHAPE</b>	
if it is attempt to choice extra accessories for fixed field, tilt/turn vent or turn+tilt/turn vent with coupling mullion: <b>THESE ACCESSORIES ARE AVAILABLE ONLY FOR TILT OR TURN VENT</b>	
if it is attempt to insert vent to too complicated polygon field: <b>VENT OPTION IS NOT AVAILABLE FOR POLYGON FIELD</b>	
if it is too small construction dimensions: <b>MIN FIELD SIZE IS</b>	<b>PLEASE CHANGE FIELD DIMENSIONS OR JOIN IT WITH BIGGER FIELD</b>
when one of field sides is too small for vent: <b>RIGHT EDGE TOO SMALL FOR VENT</b> <b>LEFT EDGE TOO SMALL FOR VENT</b>	
if it is attempt to insert vent to field with site or bottom bow: <b>BOTTOM OR SIDE BOW NOT AVAILABLE FOR VENTS</b>	
if it is too small radius dimensions for construction: <b>RADIUS TOO SMALL</b>	
if is mistaken of sequence for dimensional changes: <b>THIS DIMENSION CANNOT BE CHANGED</b>	<b>PLEASE CHANGE DIMENSIONS OF ELEMENT ALREADY EDITED</b>
if is wrong construction dimensions: <b>WINDOW HEIGHT MUST BE IN RANGE FROM 150mm TO 6000mm</b> <b>WINDOW WIDTH MUST BE IN RANGE FROM 150mm TO 6000mm</b> <b>WINDOWS CIRCUMFERENCE MUST BE IN RANGE FROM 1884mm TO 18840mm</b> <b>FRAME PROFILE LENGTH MUST BE IN RANGE FROM 0mm TO 6500mm</b>	<b>PLEASE CHANGE CONSTRUCTION FEATURES</b> <b>PLEASE CHANGE CONSTRUCTION FEATURES</b> <b>PLEASE CHANGE CONSTRUCTION FEATURES</b> <b>PLEASE CHANGE CONSTRUCTION FEATURES</b>
if is too many pieces of item: <b>MIN NUMBER OF ITEMS 1 AND MAX 1000</b>	<b>PLEASE REDUCE AMOUNT OF ITEMS</b>
if is too many fields in item: <b>WRONG AMOUNT OF FIELDS</b> <b>MAX NUMBER OF FIELDS IS 200</b>	<b>PLEASE CHANGE AMOUNT OF FIELDS</b> <b>PLEASE REDUCE AMOUNT OF FIELDS</b>
if was selected single glass for item: <b>SINGLE GLASS CAN NOT BE USED IN VENTS</b>	<b>PLEASE CHANGE GLASS OR CONSTRUCTION FEATURES</b>
limitations dimensional for vent fittings: <b>MAX WEIGHT OF VENT IS {0} kg FOR THIS GLASS</b> <b>MAX AREA OF VENT IS {0} sqm</b> <b>MAX HEIGHT OF VENT IS {0} mm</b> <b>MAX WIDTH OF VENT IS {0} mm</b> <b>MIN HEIGHT OF VENT IS {0} mm</b> <b>MIN WIDTH OF VENT IS {0} mm</b> <b>SASH WIDTH TO HEIGHT RATIO IS NOT CORRECT</b> <b>SASH WIDTH TO HEIGHT RATIO IS NOT CORRECT</b>	<b>PLEASE CHANGE GLASS OR CONSTRUCTION FEATURES</b> <b>PLEASE CHANGE CONSTRUCTION FEATURES</b> <b>PLEASE CHANGE CONSTRUCTION FEATURES</b> <b>PLEASE CHANGE CONSTRUCTION FEATURES</b> <b>PLEASE CHANGE CONSTRUCTION FEATURES</b> <b>PLEASE CHANGE CONSTRUCTION FEATURES</b> <b>PLEASE CHANGE DIMENSIONS OR SELECT "FIXED" FOR THIS FIELD</b> <b>PLEASE CHANGE DIMENSIONS OR SELECT "FIXED" FOR THIS FIELD</b>
limitations dimensional for glass in each field: <b>MAX FIELD SIZE IS {0}x{1} mm FOR THIS GLASS</b> <b>MIN FIELD SIZE IS {0}x{1} mm FOR THIS GLASS</b> <b>MAX FIELD AREA IS {0} sqm FOR THIS GLASS</b>	<b>PLEASE CHANGE TYPE OF GLASS OR FIELD DIMENSIONS OR JOIN FIELDS INTO BIGGER FIELD</b> <b>PLEASE CHANGE TYPE OF GLASS OR FIELD DIMENSIONS OR JOIN FIELDS INTO BIGGER FIELD</b> <b>PLEASE CHANGE TYPE OF GLASS OR FIELD DIMENSIONS OR JOIN FIELDS INTO BIGGER FIELD</b>
when was created too small field (almost invisible) and without to select on the screen:	



<b>MIN FIELD SIZE IS {0}x{1} mm</b>	PLEASE NOTE THAT DUE TO DIMENSION RESTRICTIONS TWO FIELDS SHOULD BE JOINED INTO ONE
when was created too small field with possibility to select on the screen: <b>MIN FIELD SIZE IS (min: " + ..... + "mm)</b>	PLEASE CHANGE FIELD DIMENSIONS OR JOIN IT WITH BIGGER FIELD
when was typing wrong graphic symbol or letter in dimension box: <b>TYPING ERROR</b>	PLEASE TYPE DIGITS ONLY
when exceeded static parameters: <b>PLEASE NOTE THAT STATIC PARAMETERS HAVE BEEN EXCEEDED</b>	PLEASE CHANGE DIMENSIONS OR CONTACT HANSEN POLSKA
when construction was not finished: <b>ONE OF ITEMS NOT COMPLETELY CALCULATED</b>	PLEASE COME BACK TO ITEM LIST AND FINISH ITEMS
when is attempt to remove Lock-box in part of sash with handle: <b>YOU CAN'T REMOVE LOCKBAR WITH HANDLE</b>	
if is wrong doors dimension: <b>DOOR HEIGHT MUST BE IN RANGE FROM {0} mm TO {0} mm</b> <b>DOOR WIDTH MUST BE IN RANGE FROM {0} mm TO {0} mm</b>	PLEASE CHANGE CONSTRUCTION FEATURES PLEASE CHANGE CONSTRUCTION FEATURES
if is wrong dimension for arched constructions: <b>HEIGHT CANNOT BE GREATER THAN 1/2 OF WIDTH</b>	PLEASE CHANGE CONSTRUCTION FEATURES
if was exceeded minimum angle for cutting of profile: <b>MIN ANGLE BETWEEN PROFILES IS 45 DEGREES</b>	PLEASE CHANGE CONSTRUCTION DIMENSIONS OR SHAPE
if is wrong doors dimension for sash with handle: <b>HANDLE SASH DOOR MUST BE IN RANGE FROM 700 mm TO 1200 mm</b>	PLEASE CHANGE CONSTRUCTION DIMENSIONS
if is wrong doors dimension for sash with no-handle: <b>NO HANDLE SASH DOOR MUST BE IN RANGE FROM 300 mm TO 1200 mm</b>	PLEASE CHANGE CONSTRUCTION DIMENSIONS
If not finished editing all components of entrance item: <b>NOT ALL ITEMS OF ENTRANCE HAVE BEEN FINISHED</b>	PLEASE FINISH CORRECTLY ITEMS INSIDE ENTRANCE
when Summary = 0,00 PLN for various reasons: <b>ATTENTION! NOT ALL ELEMENTS HAVE BEEN CALCULATED</b>	PLEASE GO BACK TO ITEM LIST AND VERIFY CONSTRUCTION OR CONTACT HANSEN POLSKA
when cost of transport has not been calculated: <b>ATTENTION! COST OF TRANSPORT CAN'T BE CALCULATED</b>	NO TRANSPORT COST UNTIL 116 LINEAR METERS OF ALL ELEMENTS IN TOTAL_(=WIDHT SUMMARY) CONTACT HANSEN POLSKA PLEASE
when program has not calculated static: „Please edit item and change the following: 1)Static parameters - change dimensions or division or split construction; OR 2) Glass parameters – change thickness of glass (thicker than before) for use more strengthens subsystems according to ‘Database Profiles Systems’ matrix.” <b>Subtitles:</b> <b>PLEASE DEFINE BASIC DIMENSIONS</b> <b>PLEASE SELECT FIELDS AND CHANGE DIMENSIONS OR JOIN FIELDS IN NEXT STEP</b> <b>PLEASE SELECT FIELD OR GROUP AND DEFINE FUNCTIONS</b> <b>PLEASE SELECT VENT AND EXTRA ACCESSORIES REQUIRED:</b> <b>CHOOSE EXTRA ACCESSORIES FOR VENTS:</b> <b>CHOOSE EXTRA ACCESSORIES FOR ITEMS:</b>	
<b>REQUIRED DELIVERY DATA TO BE CONFIRMED BY HANSEN POLSKA</b>	
END	